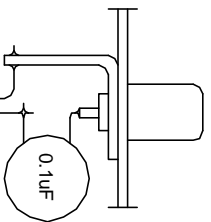


Phono (RCA)
jack
Radio Shack
274-346

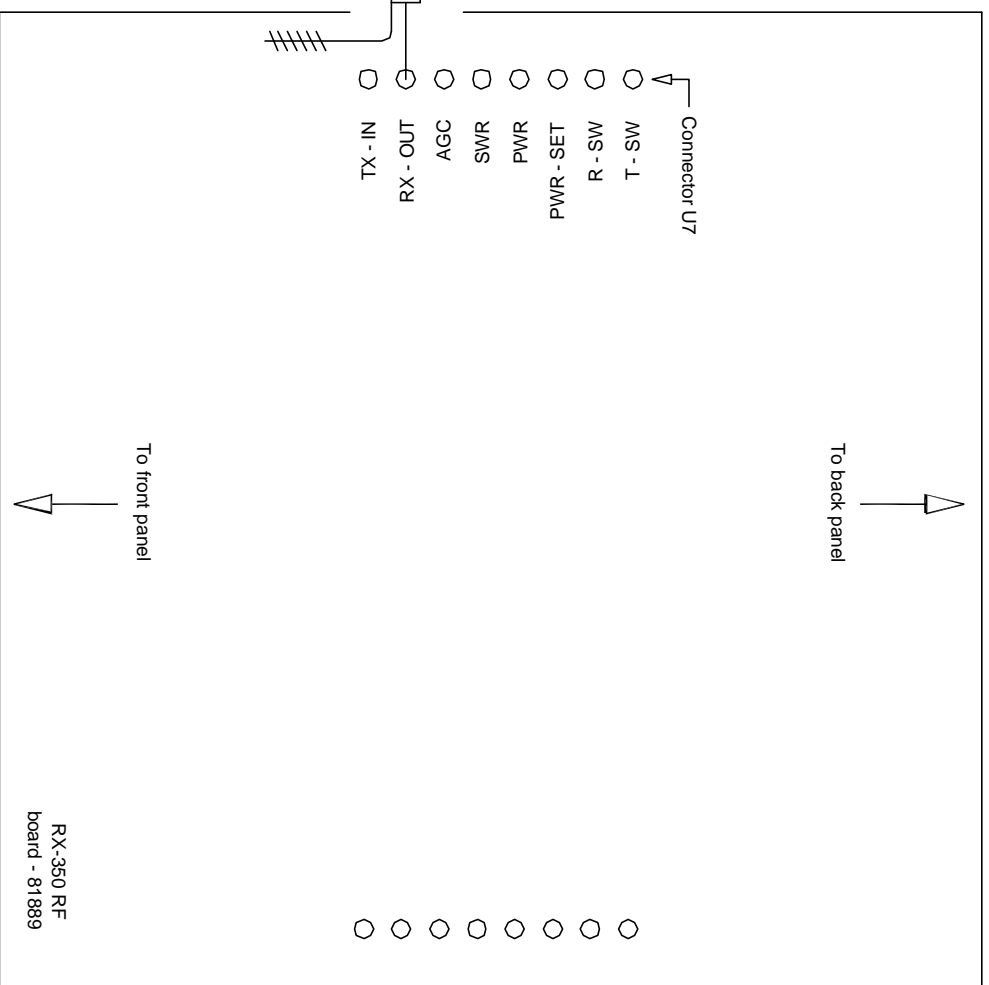
Solder braid to
solder lug

Shielded cable
(RG-174U or
equivalent)

Solder braid to
PC board



- Notes:
1. I am not responsible for any damage, direct or consequential, to your equipment due to performing these modifications.
 2. Mount RCA jack at convenient location on back panel. Use suitable length of coaxial cable.
 3. Capacitor is 0.1uF disc ceramic.
 4. Note upside-down text at connector U7. This is how it should look when viewing the board from the front panel side.



**RX-350 12KHz IF
Output for
DRM Reception**